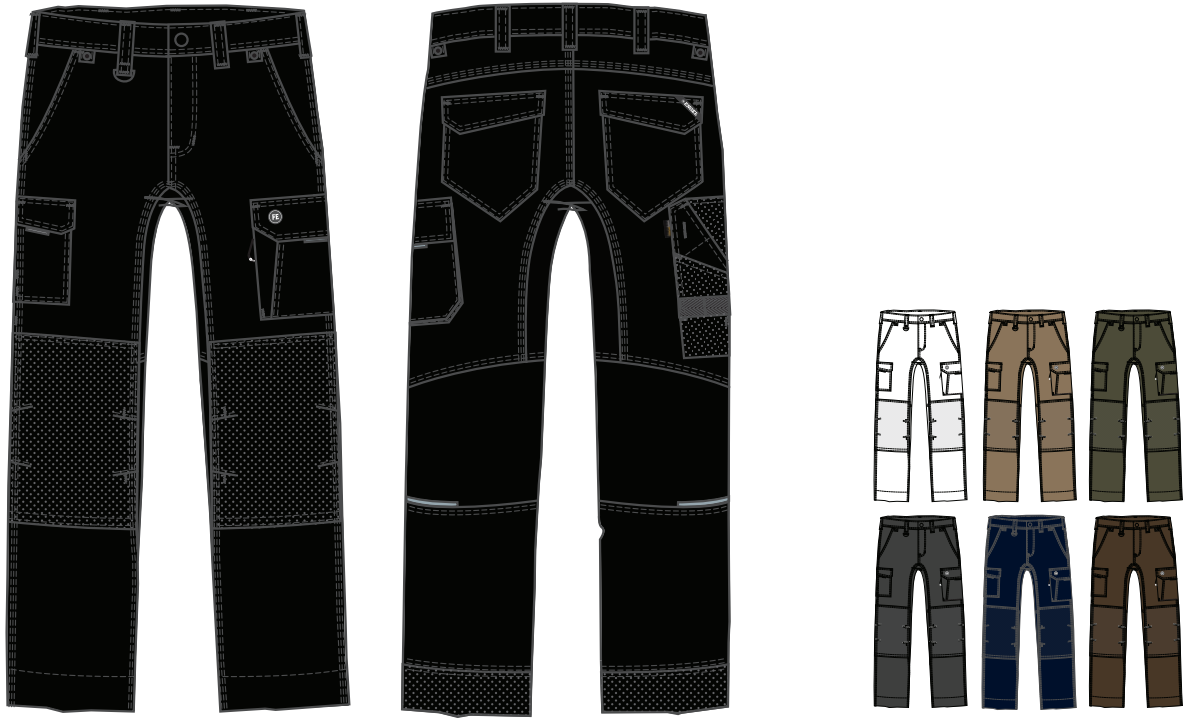


X-TREME STRETCHABLE WORK TROUSERS



0360-186

X-treme stretchable work trousers

Size	EN 42-66 / 22-28 UK 28,5-47 / S31,5-S41
Quality	65% polyester/35% cotton, 250 g/m ² Mechanical stretch
Colours	3 White - 20 Black - 41 Toffee Brown - 53 Forest Green - 79 Anthracite Grey 165 Blue Ink - 167 Mocca Brown
Wash	

OEKO-TEX®
STANDARD 100
BY 1580 071
www.oeko-tex.com

CORDURA
FABRIC



Extra leg
length



Buttons for
hanging tool
pockets

Stretchable, functional work trousers in slim fit with many practical details. Optimal fit with ergonomic knees and inner seam panel, providing a comfortable crotch seam. The stretchable fabric gives added comfort, and patches of highly stretchable and ventilated material at the knee backs and in the inner seam panel provide even more comfort. D ring at front to affix an ID card, etc. Two spacious slanted pockets at the front. Two back pockets with flaps. Mobile phone pocket with flap on right thigh. There is a thigh pocket with a flap on the left side. The thigh pocket has an extra zipped pocket. Reinforced ruler pocket with extra sections and tool straps. Thigh pocket and ruler pocket, both with hanging bottom for optimal movement. Knee reinforcement/knee pockets with bottom Velcro closure and two knee pad positions for height adjustment. Reinforcement at back of trouser leg ends for extra durability. Reflectors behind knees for greater visibility. The trousers have an extra deep hem so the length of the trousers can be increased if required. A single seam is extended to provide extra leg length, while the seam stays sealed.

FE ENGEL